

The Future of mobility is Shared, Connected & Electric



Cube 72V, 25Ah Li-ion Fixed Battery

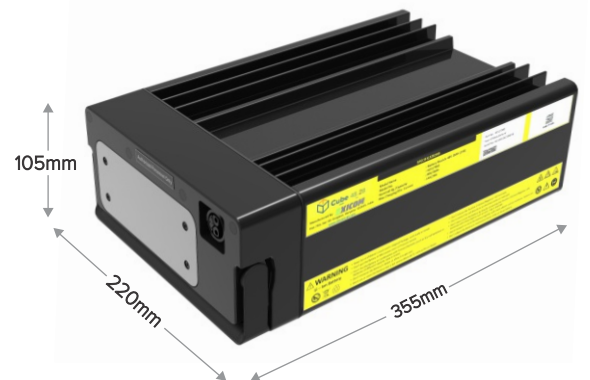
A reliable high performance Li-ion battery for light electric vehicles

Key Features:

- Compatible with most existing electric 2W and 3W
- CAN enabled for vehicle & charging communication needs
- Ergonomic design enables easy access and easy charging or swapping experience
- Use of NCM cells for high energy density and cycle life
- Intelligent charging algorithm to enhance battery life
- Bluetooth based App connectivity for user interface
- Seamless integration with our cloud platform for remote management
- AIS 048 certified

Performances:

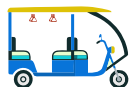
- High energy density – upto 223Wh/l
- Peak power tolerance of 4.3kW for 10 sec
- Cycle life of +1,000 cycles under nominal operating conditions
- Safety first with multi-level protection features
- Unibody Al extrusion designed for superior thermal performance
- Proprietary built in battery management system (BMS) & power distribution unit (PDU)
- Works in heat, rain, sun – our batteries are all weather proof with IP67 certification
- Minimal self-discharge at 3%/month



Applications:



E-Bikes



E-Auto



Small EV's



Forklifts



AGV

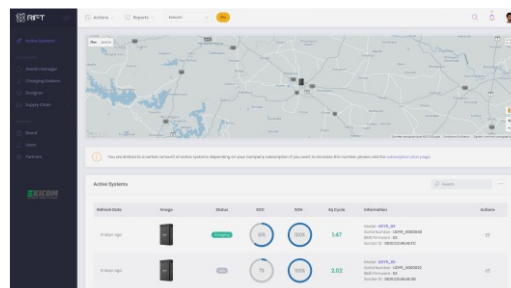
Technical Specifications

General	Battery pack	25Ah, NMC chemistry
	Rated energy	1.84 kWh (0.2C, 100% DoD at 25 °C)
	Specific energy	141.7 Wh/Kg
	Volumetric energy	222.8 Wh/l
	Estimated life (at 80% DoD and 35°C)	1,000 cycles
Electrical Characteristics	Nominal voltage	72 Vdc
	Charge current	12A (nominal)
	Nominal charging time	2 hours
	Discharge current	25A (nominal)
	Peak discharge current	95A for 10 sec
	Efficiency	>97%
	Connector Type	Standard: Circular connector with 2 power pins and 4 signal pins Optional: SBS-75X with 2 power pins and 4 signal pins (2CAN + 2 I/O)
Environment & Mechanical	Operating temperature	-10 to 50°C for charge and -10 to 60 °C for discharge
	IP class	IP 65
	Humidity	0-95% (non-condensing)
	Dimensions (w x d x h)	222 x 105 x 355 mm
	Weight	13±1 Kg
	Cooling	Passive
Protections	Over/under temperature, over/under voltage, over current, short circuit, permanent hardware failure detection	
Communication Interface	CAN Bus for vehicle and charger communication	
	SD card for regular fixed battery data & alarm event logging	
	Optional Bluetooth for mobile application dashboard showing real time battery data	
	Optional 4G telematics card for getting real time battery performance data and remote programming capability	
Applicable Standards	Transportation	UN38.3
	Safety	ARAI 048, UL2271
	EMI/EMC	EN61000-4-2 to -6
	Environment	ROHS complaint

Mobile App



Cloud Management System



High performance BMS

